

Name: \_\_\_\_\_

Date: \_\_\_\_\_

**STRETCHING PARABOLAS AND MORE COMPLETING THE SQUARE**  
**COMMON CORE ALGEBRA I HOMEWORK**

**FLUENCY**

1. The graph to the right contains the following functions. Match their letters to the correct curves.

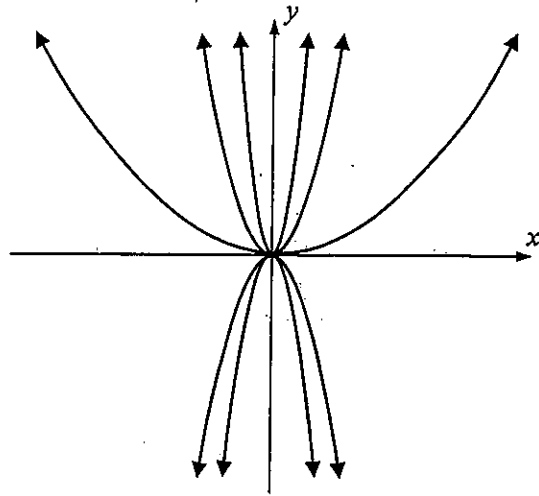
(A)  $y = x^2$

(B)  $y = -2x^2$

(C)  $y = \frac{1}{4}x^2$

(D)  $y = -x^2$

(E)  $y = 3x^2$



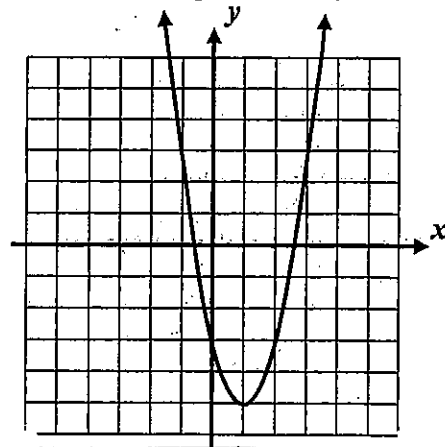
2. Which of the following equations models the graph shown at the right? Explain how you made your choice?

(1)  $y = (x-1)^2 - 5$

(2)  $y = -3(x+1)^2 - 5$

(3)  $y = (x+1)^2 - 5$

(4)  $y = 2(x-1)^2 - 5$



**Exercise #2:** The graph below shows the curves that are listed. Write the number of the equation of each beside its curve.

(1)  $y = 3x^2$

(2)  $y = \frac{1}{2}x^2$

(3)  $y = -2x^2$

(4)  $y = x^2$

(5)  $y = -x^2$

